

Service Manual

Product Axpert Max 3600-24

Doc No. P1911061 Version 00 PAGE

**Axpert Max 3600
Service manual**



Service Manual

Product Axpert Max 3600-24

Doc No. P1911061 Version 00 PAGE

Table of contents

1. GENERAL INFORMATION 3

 1.1 GETTING START 3

 1.2 BASIC TOPOLOGY INTRODUCTION 3

 1.3 INVERTER FAMILY 4

 1.4 OVERVIEW THE INVERTER 4

2. TROUBLESHOOTING 4

 2.1 HOW TO DO 4

 2.2 FAULT CONDITION 4

 2.3 TEST STEP 5

3. CHECKING AND MEASURING GUIDE 6

 3.1 CHECK THE BATTERY SIDE COMPONENTS ON MAIN BOARD 6

 3.2 CHECK THE BUS SIDE COMPONENTS ON MAIN BOARD 12

 3.3 CHECK THE BUCK CIRCUIT ON MAIN BOARD 14

 3.4 CHECK THE INV FULL BRIDGE ON MAIN BOARD 15

 3.5 CHECK BATT AND MAIN POWER SPS ON MAIN BOARD 17

 3.6 CHECK AC SPS ON MPPT BOARD 21

 3.7 CHECK THE BUS SOFT START CIRCUIT ON MPPT BOARD (TX1: ESPECIALLY FOR 09 FAULT) 22

 3.8 CHECK THE BOOST ON MPPT BOARD 24

4. DISASSEMBLING GUIDE 26

 TOTAL WIRING DIAGRAM: 30

1. General information

1.1 Getting start

This manual is used as a checking and repairing guide for Axpert Max-3600. Before read this manual, it's better to have some electrical or electronic background knowledge. With this guide, you can fix the inverter by yourself firstly.

There are five main parts of this guide:

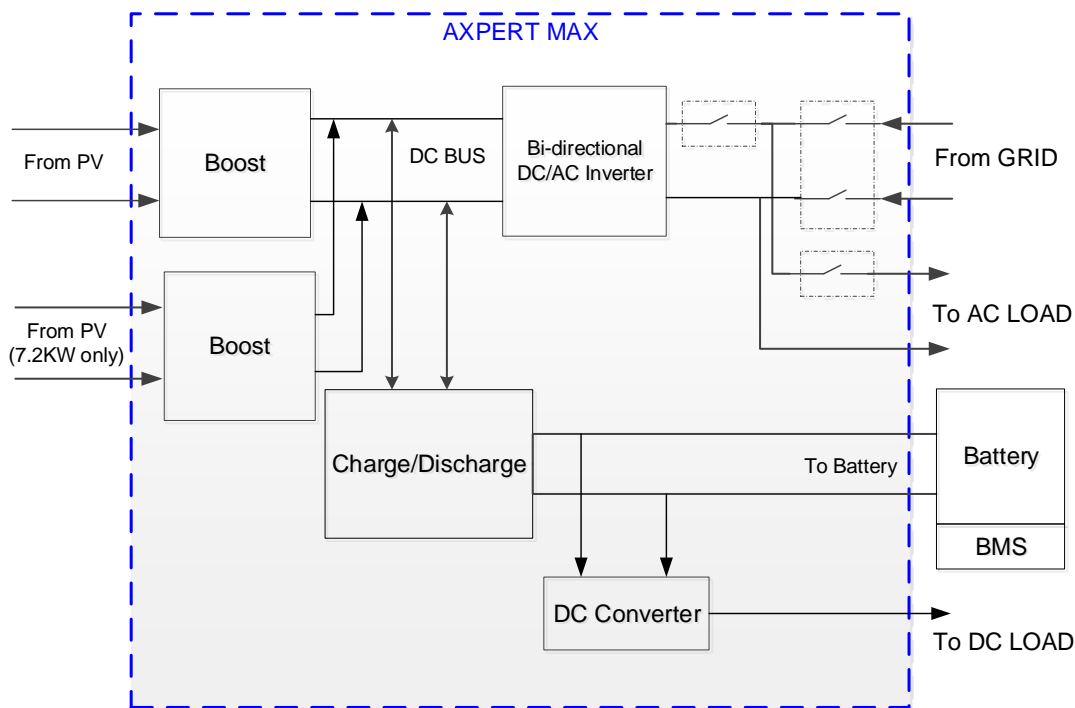
General information: This part is the basic information of the inverter; you can start to know the inverter from this chapter.

Troubleshooting: This part will tell you how to do when you face a problem.

Checking and measuring guide: This part will teach you how to check or repair the inverter by measuring the critical components.

Assembling guide: This part teaches you how to take the board outside and fix the new one.

Cables connection guide: This part will present the signal cables connection of the inverters.



1.2 Basic topology introduction

The topology of the inverter shows as below:

Compare with UPS or normal inverter, INVERTER combines a solar charger inside. Solar charger can be a supplement for battery when there is not grid. And with the solar charger, the inverter can have more working modes than UPS. For detail information please refer to our user manual.

Service Manual

Product Axpert Max 3600-24

Doc No. P1911061

Version

00

PAGE

1.3 Inverter family

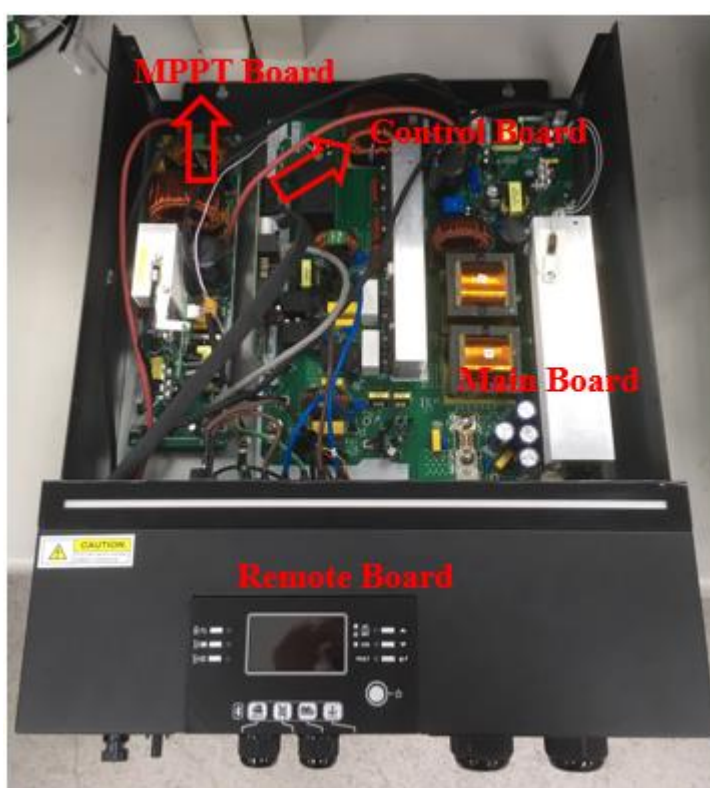
This service manual includes different models of the inverter, the table as below contains some important parameters with different models.

These models names are only neutral names; please match the real model name of your inverter to the model name in the table by comparing the typical characteristics.

Model name	Power rating	Charger type	Charger number
Axpert Max-3600	3.6KVA	MPPT	1

1.4 Overview the inverter

Axpert Max-3600



1 Troubleshooting

1.5 How to do

When the inverter was faulty, normally there are two main symptoms:

- No display at all;
- Fault code or warning code on the LCD;

When the fault occurred, please help to record the fault information and follow “How to check” of part 2.2 to check the inverter, then feedback the checking result to the service center. It will be very helpful for solving the problem as soon as possible.

1.6 Fault condition

Note:

When open the top cover, please have a look first, are there any obviously damaged parts?

When take the main board out, please have a look around, are there any obviously damaged parts?

2.2.1. Not working at all/ No display

Description	The inverter couldn't startup completely.
Possible reason	1. SPS module damaged.
How to check	1. Firstly, please measure the resistor between BAT+ and BAT-. If it is not shorted, only connect the inverter with battery, and press "ON" button, could the inverter startup? If not, please check the fan. 2. If the LCD couldn't light up and fan doesn't work, please disconnect all the wires and open the top cover, and then take the main board outside by following part 4. 3. Check the main board by following "3.5 and 3.6"
How to solve	Repair the main or replace it directly.

2.2.2. 09 fault

Description	Bus soft start fails.
Possible reason	DC-DC module was damaged or BUS soft start module was damaged.
How to check	1. Check the main board by following "3.6; 3.7"; 2. Check the main board by following "3.1; 3.2; 3.3; 3.4".
How to solve	Repair the main board or replace it directly.

2.2.3. Warning

Description	Battery couldn't be detected.
Possible reason	Wire connection or fuse was burnt.
How to check	1. Check the wire connection, the priority of the battery cable; 2. Check the main board by following "3.1".
How to solve	Repair the main board or replace it directly.

1.7 Test step

After replacing all defected components, testing steps can be used to confirm the repair result and the reliability of the Inverter.

Set up the testing system as below:

Service Manual

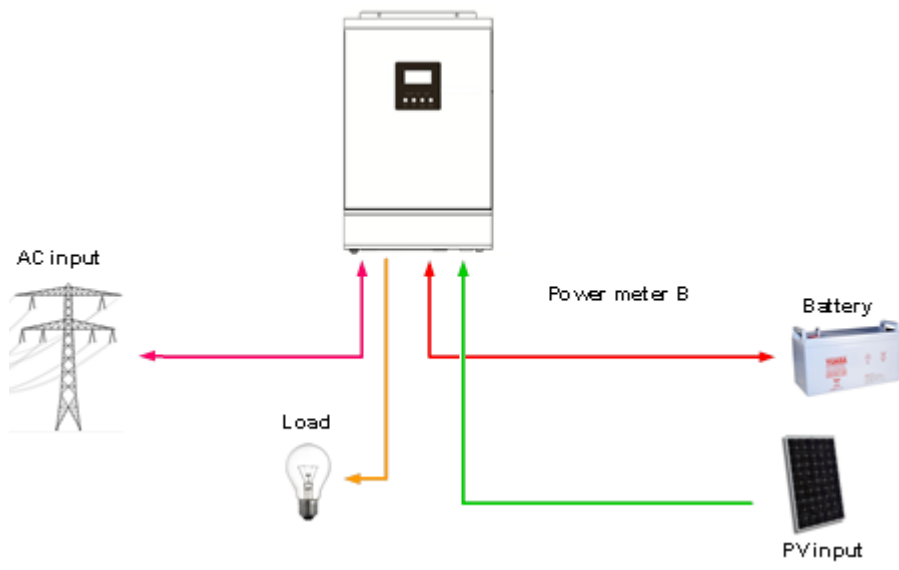
Product Axpert Max 3600-24

Doc No. P1911061

Version

00

PAGE



2. Checking and measuring guide

2.1 Check the battery side components on MAIN board

Fuse and capacitors

For Axpert Max-3600 FUCE 200A



Service Manual

Product Axpert Max 3600-24

Doc No. P1911061

Version

00

PAGE

Parts	Attribute	Reference values	Failure status
F3	Resistor	0.2 ohm	Open

For Axpert Max-3600 C11/ C18/C23: (6800uF 63V)

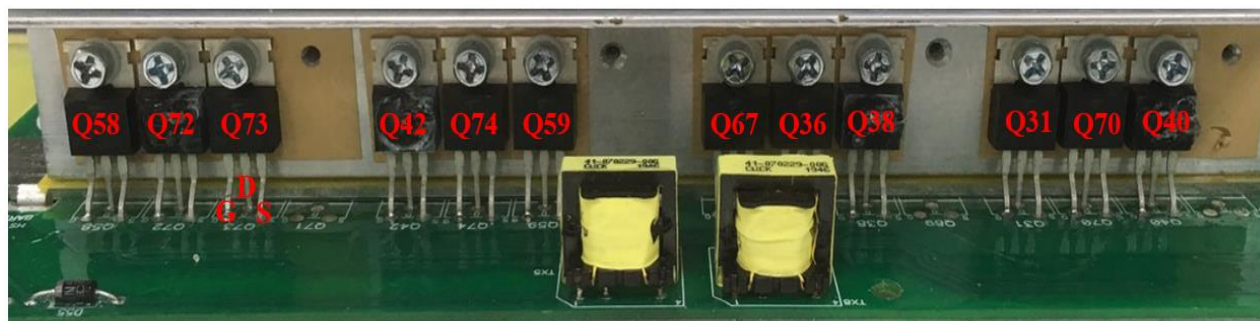


If the capacitors explode as below, they need to be replaced.



Power devices

DC/DC MOSFET: Q58/Q72/Q73 & Q42/Q74/Q59 & Q67/Q36/Q38 & Q31/Q70/Q40



Service Manual

Product Axpert Max 3600-24

Doc No. P1911061 Version 00 PAGE

For Axpert Max-3600 ALL of the MOSFET are
(TOSHIBA/TK100E08N1 214A 80V N BULK TO-220)

Parts	Attribute	Reference values	Failure status
TK100E08N1	Resistor	GS: 11.75k GD: 115.8k DS: OL	Short or explosion
	Diode	SD: 0.463V DS: OL	

Note1: When you use the multimeter to measure the resistor of the transistor, because of the capacitor in the circuit, it will cause the changing of the values when you measure the DS and GD. So we recommend you measure the diode forward voltage of SD, and the resistor of GS. These two values can reflect the situation of the transistor more correctly.

Note2: If one or more of them were damaged, please replace all of them.

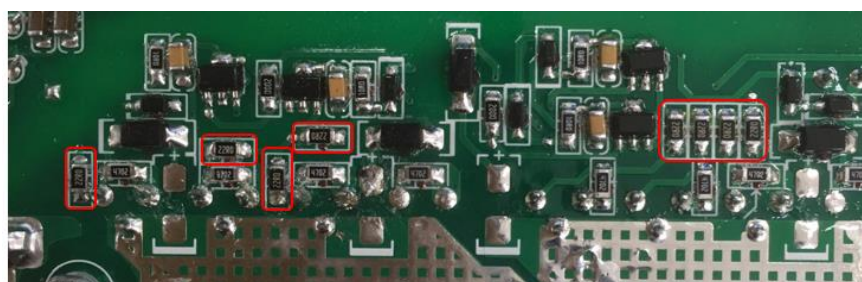
3.1.1. Drivers (This part is only used for repair checking)

Note: Drivers usually need to be checked when users want to repair the boards. Because when power devices were damaged, the high voltage will rush to driver circuit through the gates of power devices.

The reference of the resistors list as below:

R232/R236/R127/R128/R233/R237/R216/R190

R192/R241/R223/R224//R197/R243/R234/R225 All of the resistors are (22R 1206)



Service Manual

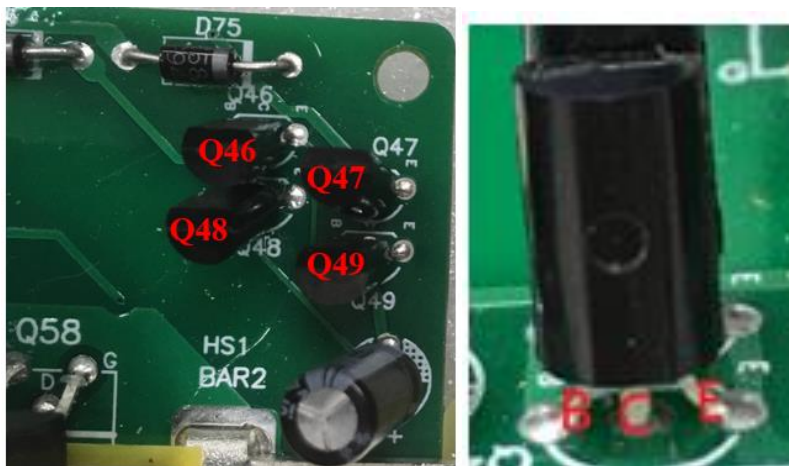
Product Axpert Max 3600-24

Doc No. P1911061 Version 00 PAGE

Use multimeter to measure each resistor, find the burnt resistors and replace them; don't need to replace them all.

Parts	Attribute	Reference values	Failure status
All: 22ohm	Resistor	22 ohm	Open or other values

If the resistors need to be replaced, please also check the driver transistors and control IC.



The Q46 and Q48 are (2SC2655 2A 50V NPN TAP TO-92)

The Q47 and Q49 are (2SA1020L-Y-T9N-B 2A 50V PNP TAP TO-92NL)



The Q41 and Q43 are (2SC2655 2A 50V NPN TAP TO-92)

The Q15 and Q16 are (2SA1020L-Y-T9N-B 2A 50V PNP TAP TO-92NL)

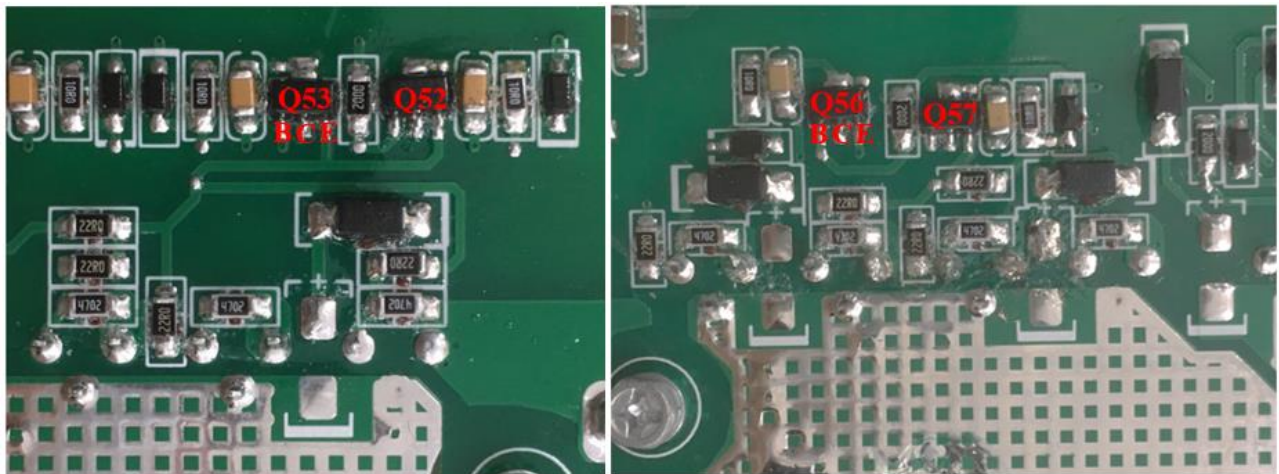
Parts	Attribute	Reference values	Failure status
Q46/Q48	Resistor	BE: 430k BC: 430k	Short or explosion

Service Manual

Product Axpert Max 3600-24

Doc No. P1911061 Version 00 PAGE

		EC: 16k	
	Diode	BE: 0.65V BC: 0.65V CE: 0.28V	
Q41/Q43	Resistor	BE: 430k BC: 425k EC: 104k	Short or explosion
	Diode	BE: 0.65V BC: 0.65V CE: 0.28V	
Q47/Q49	Resistor	BE: 430k BC: 430k EC: 8k	Short or explosion
	Diode	BE: 0.65V BC: 1.75V CE: 0.20V	
Q15/Q16	Resistor	BE: 430k BC: 430k CE: 8k	Short or explosion
	Diode	BE: 0.65V BC: 1.5V CE: 0.28V	



The Q52 and Q56 are (2SD1624 2A 50V NPN SOT-89)

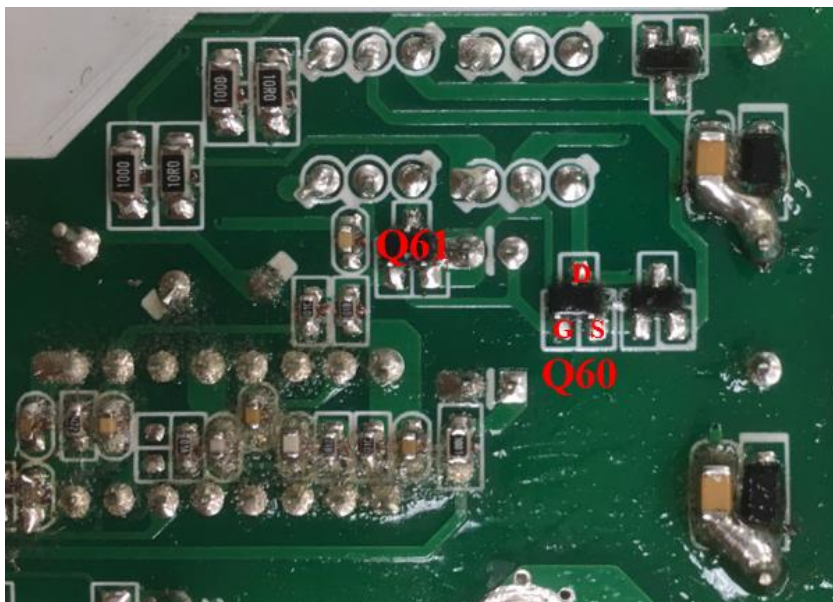
Service Manual

Product Axpert Max 3600-24

Doc No. P1911061 Version 00 PAGE

The Q53and Q57 are (2SA1020 3A 50V PNP SOT-89)

Parts	Attribute	Reference values	Failure status
Q52/Q56	Resistor	BE: 12k BC: 280k CE: OL	Short or explosion
	Diode	BE: 0.64V BC: 0.64V CE: OL	
Q53/Q57	Resistor	BE: 12k BC: OL CE: 280k	Short or explosion
	Diode	BE: 0.64V BC: OL CE: 1.09V	



The Q60 and Q61 the MOSFET are (UT3404G 5.8A 30V NPN SOT-23 SMD)

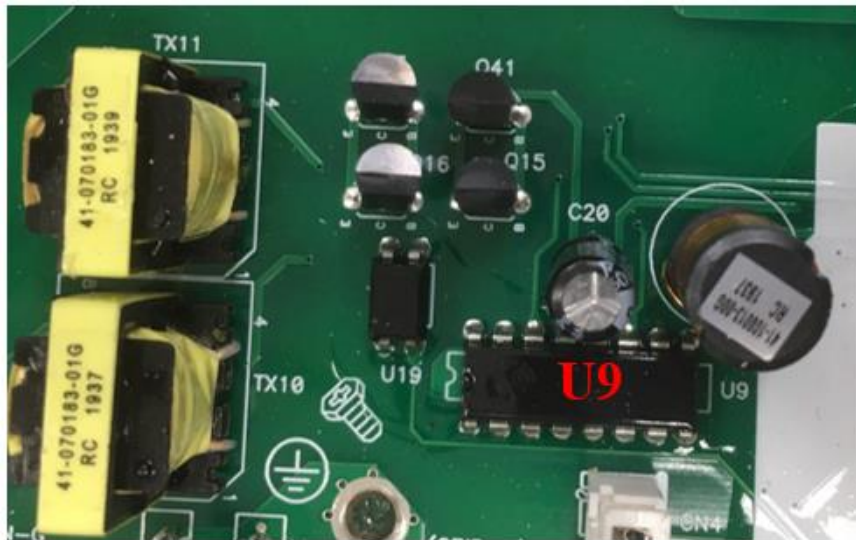
Parts	Attribute	Reference values	Failure status
Q60/Q61	Resistor	GS: 5.637k GD: 107k SD: 98k	Short or explosion

Service Manual

Product Axpert Max 3600-24

Doc No. P1911061 Version 00 PAGE

	Diode	SD: 0.28V DS: 1.14V	
--	-------	------------------------	--



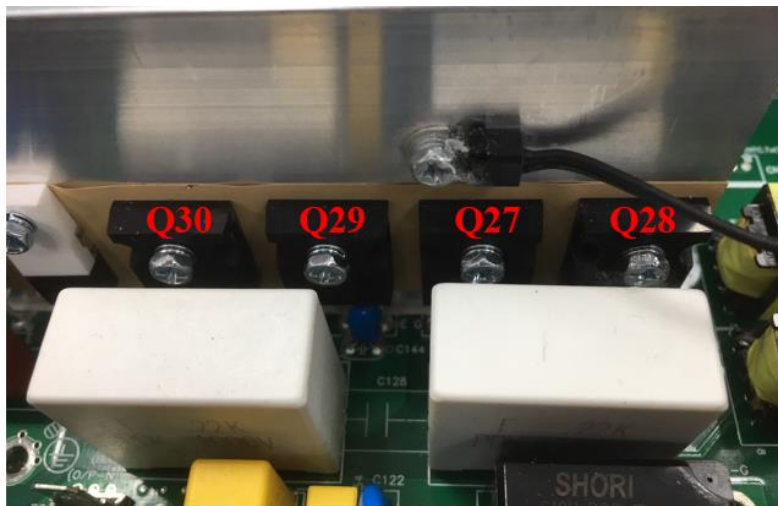
The U9 is (IC PWM CNTL TI/UC3525ANG DIP-16)

Parts	Attribute	Reference values	Failure status
U9	Resistor	PIN13 TO PIN12: 8.8k PIN11 TO PIN12: 432k PIN14 TO PIN12: 432k	Short or explosion

2.2 Check the bus side components on MAIN board

Power devices

DC/DC IGBT: Q27/Q28/Q29/Q30



For Axpert Max-3600 ALL of the IGBTs are (IGBT ST/STGW60H65DFB 60A 650V N BULK TO-247)

Service Manual

Product Axpert Max 3600-24

Doc No. P1911061 Version 00 PAGE

Parts	Attribute	Reference values	Failure status
Q27/Q28/Q29/Q30	Resistor	GE: 22 ohm GC: 184k EC: 184K	Short or explosion
	Diode	EC: 0.37V CE: OL	

Note1: When you use the multimeter to measure the resistor of the transistor, because of the capacitor in the circuit, it will cause the changing of the values when you measure the CE and GE. So we recommend you measure the diode forward voltage of EC, and the resistor of GE. These two values can reflect the situation of the transistor more correctly.

Note2: If one or more of them were damaged, please replace all of them.

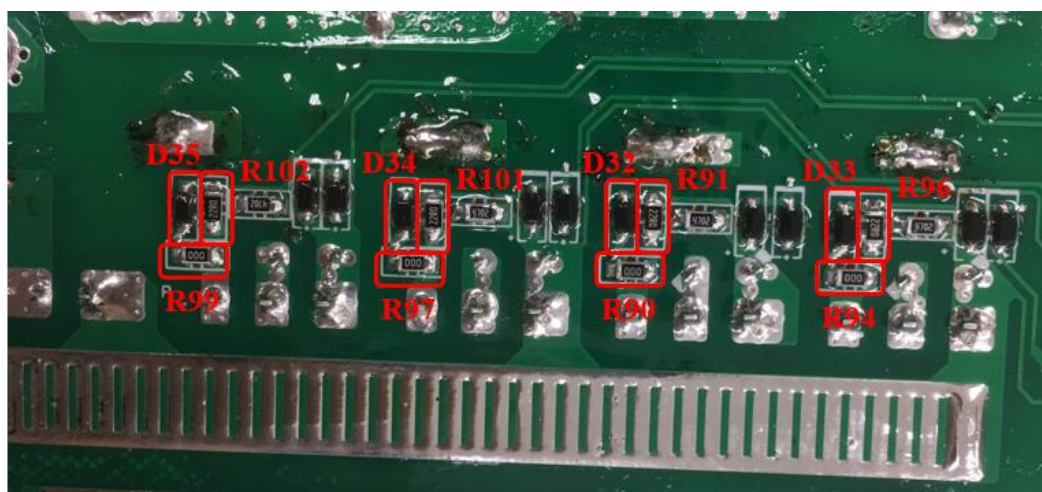
Drivers (This part is only used for repair checking)

Meanwhile, we also need to check the driver tubes of these power tubes.

R91/R102/R96/R101: (22R 1206)

R90/R99/R94/R97: (0R 1206)

D32/D35/D33/D34: (1N4148W 0.15A 75V SMD)



Parts	Attribute	Reference values	Failure status
R91/R102/R96/R101	Resistor	22 ohm	Open or other values
R90/R99/R94/R97	Resistor	0 ohm	
D32/D35/D33/D34 ¹	Resistor	+ to -: 270k - to +: OL	Short or explosion

Service Manual

Product Axpert Max 3600-24

Doc No. P1911061 Version 00 PAGE

Diode	+ to -: 0.6V - to +: OL
-------	----------------------------

Note1: When test the diode; please remove the R90/R99/R94/R97 from the board, or the test result is not right.

2.3 Check the buck circuit on MAIN board

Power devices

BUCK MOSFET and Diode: Q32/D13



For Axpert Max-3600 the IGBTs Q32 is (IGBT ST/STGW60H65DFB 60A 650V N BULK TO-247)

The D13 is (RHRP1560 15A 600V UFST RAD BULK)

Parts	Attribute	Reference values	Failure status
Q32	Resistor	GE: 22.8k GC: 49.5k CE: OL	Short or explosion
	Diode	CE: OL EC: 0.393V	
D13	Resistor	+ to -: 195k	

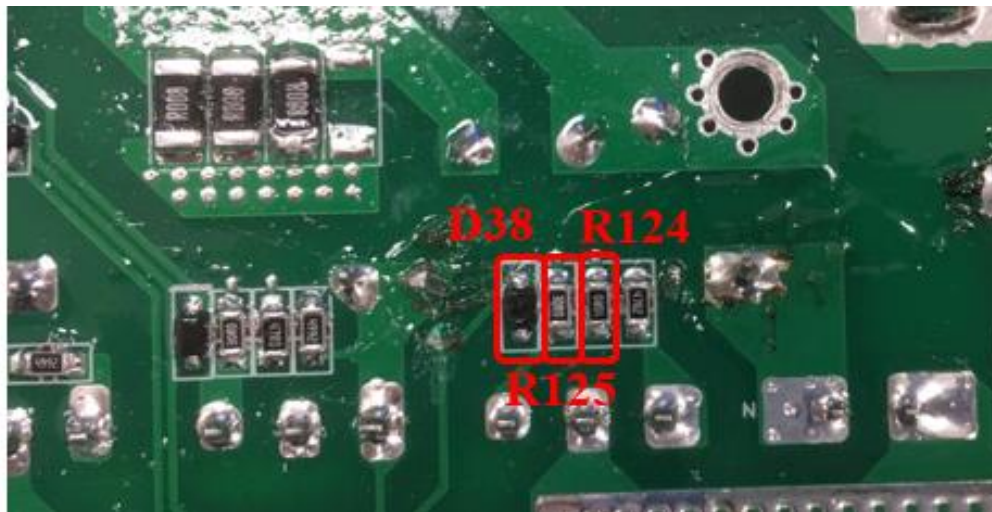
Service Manual

Product Axpert Max 3600-24

Doc No. P1911061 Version 00 PAGE

		- to +: OL	
	Diode	+ to -: 0.39V	
		- to +: OL	

Drivers (This part is only used for repair checking)



The R124 are (10R 1206)

The R125 are (30R 1206)

The D36 are (1N4148W 0.15A 75V SMD)

Parts	Attribute	Reference values	Failure status
R125	Resistor	30 ohm	Open or other values
R124	Resistor	10 ohm	
D38	Resistor	+ to -: 40 ohm - to +: OL	Short or explosion
	Diode	+ to -: 0.6V - to +: OL	

Note1: When test the diode; please remove the R124 from the board, otherwise the test result is not right.

2.4 Check the INV full bridge on MAIN board

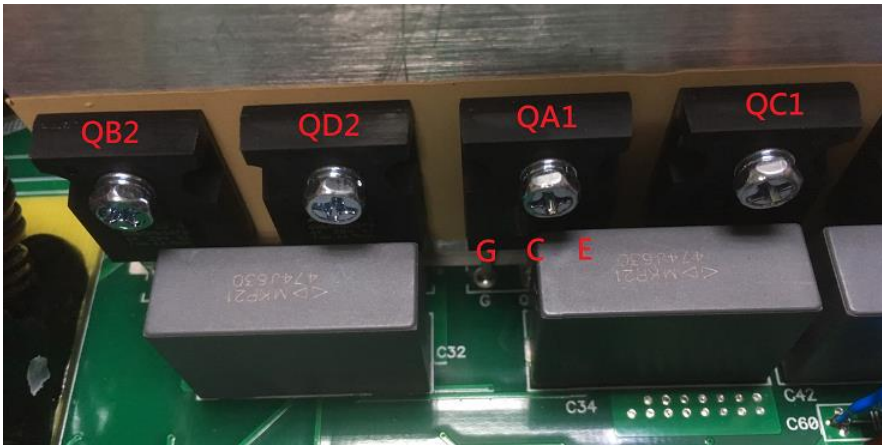
Power devices

INV IGBT: QA1/QC1/QB2/QD2

Service Manual

Product Axpert Max 3600-24

Doc No. P1911061 Version 00 PAGE



All of the IGBT are (STGW60H65DFB 60A 650V N BULK TO-247)

Parts	Attribute	Reference values	Failure status
QA1/QC1/QB2/QD2	Resistor	GE: 23k GC: 235k CE: 700k	Short or explosion
	Diode	EC: 0.4V CE: OL	

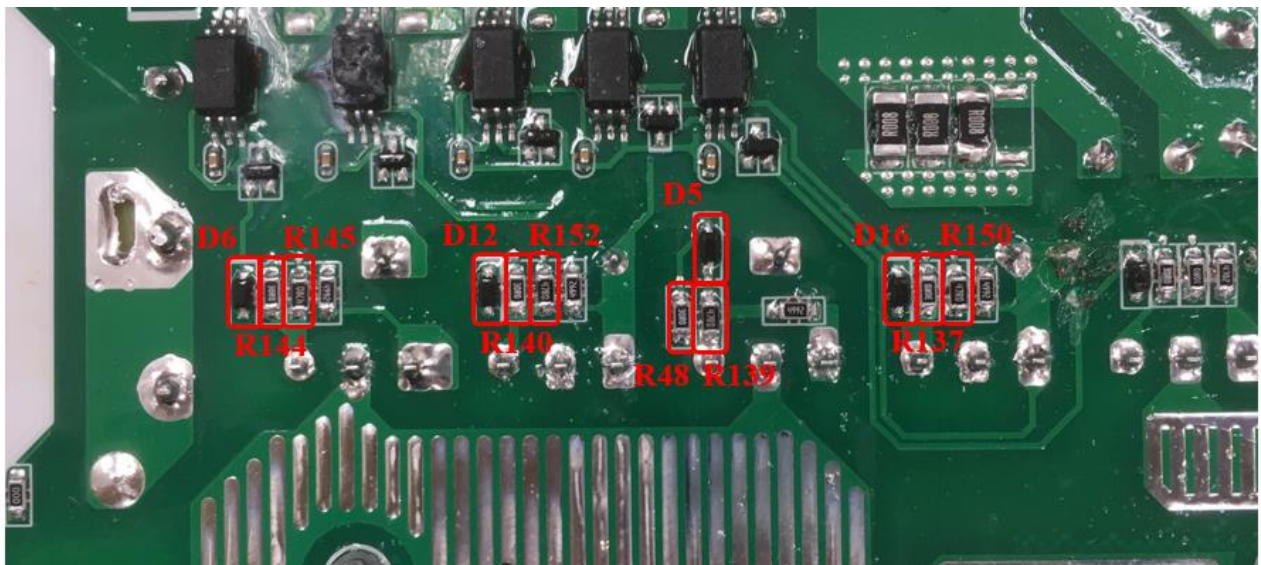
Note1: If one or more of them were damaged, please replace all of them.

Drivers

R48/R144/R140/R137: (30R 1206)

R139/R145/R150/R152: (47R 1206)

D5/D6/D12/D16: (1N4148W 0.15A 75V SMD)



Parts	Attribute	Reference values	Failure status
-------	-----------	------------------	----------------

Service Manual

Product Axpert Max 3600-24

Doc No. P1911061 Version 00 PAGE

R48/R144/R140/R137	Resistor	30 ohm	Open or other values
R139/R145/R150/R152	Resistor	47 ohm	Open or other values
D5/D6/D12/D16	Resistor	+ to -: 80 ohm - to +: OL	Short or explosion
	Diode	+ to -: 0.6V - to +: OL	

Note1: When test the diode; please remove the R139/R145/R150/R152 from the board, ortherwise the test result is not right

Optocoupler: U1/U2/U3/U4/U12



ALL of the optocoupler are (TI/UCC23513DWYR 6/SOIC SMD)

Parts	Attribute	Reference values	Failure status
U2/U4/U12	Resistor	PIN4 TO PIN5: 0.63V PIN4 TO PIN6: 0.43V	Short or explosion
U1/U3	Resistor	PIN4 TO PIN5: 0.63k PIN4 TO PIN6: 0.52k	

2.5 Check BATT and Main Power SPS on MAIN board

BATT Power SPS

The F1 is (FUSE 5A 125V)

The NTC2 is (THERMISTOR NTC 5OHM 5A SCK13055LSY)

The MOSFET Q65 is (IRF640NPBF 18A 200V N BULK TO-220)

The R246 is (RES 3W 0.15ohm)

The TX2 are (TX 2:5:45:3 FER EC28, DMR40)

The R245 is (RES 3W 0.15ohm)

The D61 are (MUR4100ERLG 4A 1000V UFST RAD TAP)

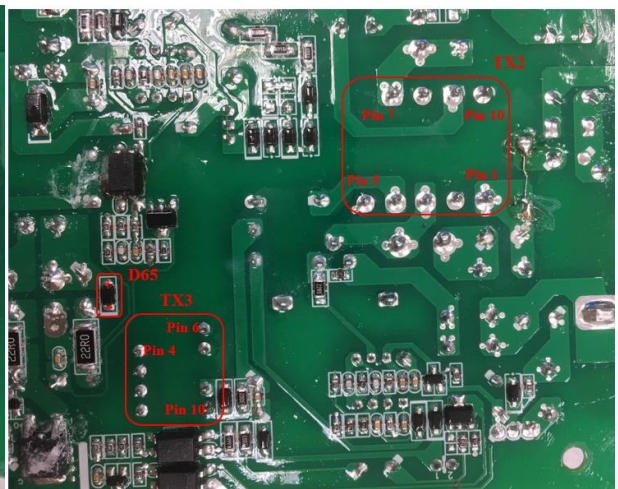
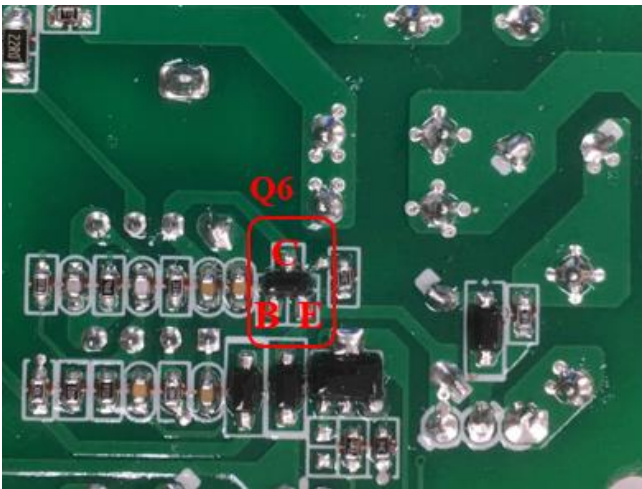
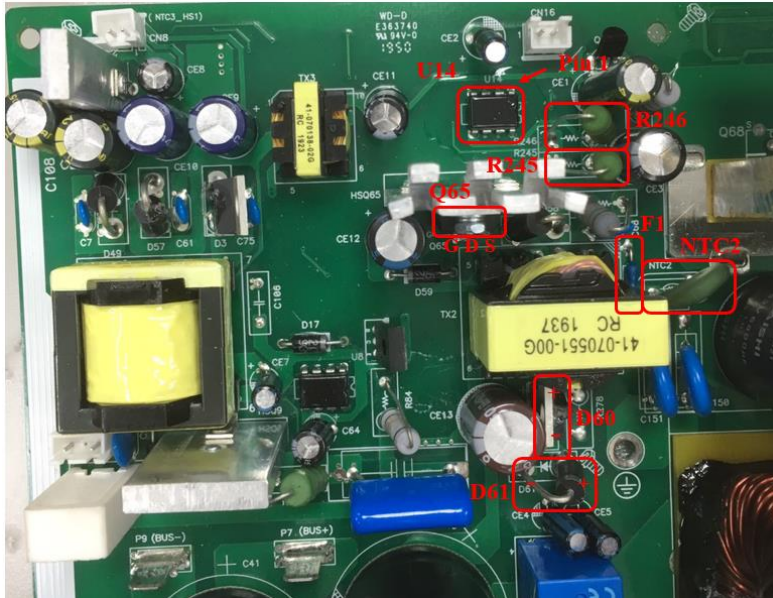
The D60 are (RHRP860 8A 600V SFST RAD BULK)

Service Manual

Product Axpert Max 3600-24

Doc No. P1911061 Version 00 PAGE

The U14 are (IC UC3845BNG DIP-8)
 The Q6 are (PMBT2907A 0.6A 60V SMD)
 The TX3 are (TX 16:16:16 FER EE16)
 The D65 are (RS1J 1A 600V SMD)



Parts	Attribute	Reference values	Failure status
F1	Resistor	0 ohm	Open or explosion
NTC2	Resistor	5 ohm	Open or explosion
D61	Diode	+ to -: 0.468V - to +: OL	Short or explosion
D60	Diode	+ to -: 0.435V - to +:OL	Short or explosion
R245	Resistor	0.15ohm	Open or other values

Service Manual

Product Axpert Max 3600-24

Doc No. P1911061 Version 00 PAGE

R246	Resistor	0.15ohm	Open or other values
Q65	Resistor	GS: 45.51k GD: 44.6k SD: 115k	Short or explosion
	Diode	SD: 0.463V GS: OL	
U14	Resistor	PIN7 TO PIN5: 77.5K PIN6 TO PIN5: 45.48K	Short or other values
Q6	Resistor	EB: 512k CB: 456k	Short or other values
	Diode	CB: 0.688V EB: 0.691V	
TX2	Resistor	PIN7 to PIN9: 0.4ohm	Short or other values
TX3	Resistor	PIN9 to PIN10: 0.3ohm	Short or other values
D65	Diode	+ to -: 0.52V - to +: OL	Short or explosion

Note1: When test the Q65; please remove the R245 from the board, otherwise the test result is not right

Note2: When test the D69; please remove the D65 from the board, otherwise the test result is not right

Main Power SPS

The MOSFET Q9 are (IXFP7N100P 7A 1000V N BULK TO-220)

The Q8 are (2SC5353BL 3A 750V TO-126C)

The U8 are (IC PWM UC3845BNG DIP-8)

The R203 are (RES 5W 0.5ohm)

The R204 are (RES 1/4W 10ohm 1206)

The D53 are (1N4148W 0.15A 75V SMD)

The R67 are (RES 1/4W 22ohm 1206)

The D3 are (RHRP860 8A 600V SFST RAD BULK)

The D49 and D57 are (MUR460RLG 4A 600V UFST)

The U7 are (IC L7912CV 3P TO-220)

The U10 are (IC MC78M05CDTRKG DPAK-3)

The TX4 are (TX 8:21:2:4:8:21:7 FER EC28)

Service Manual

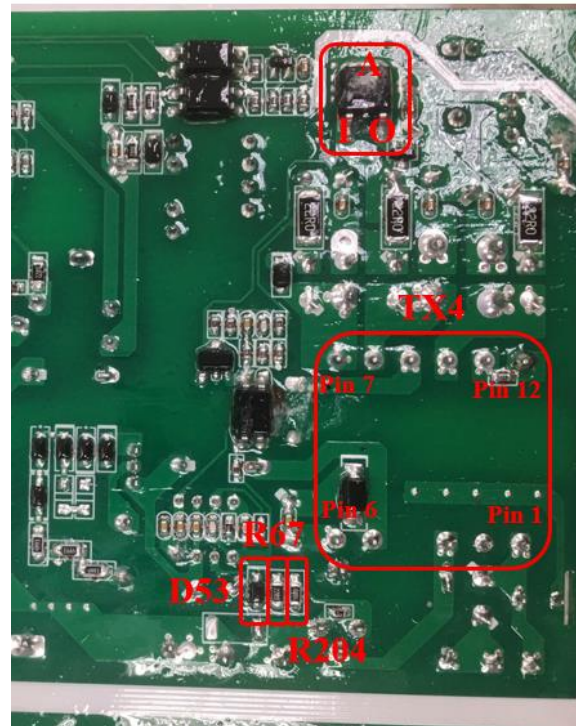
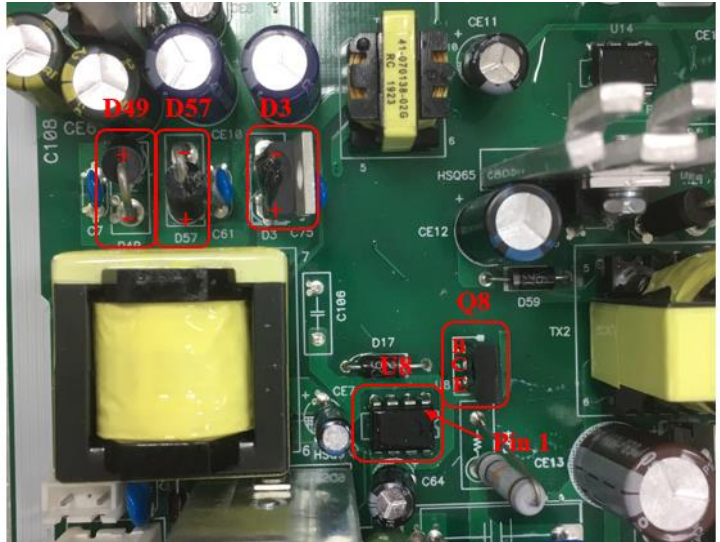
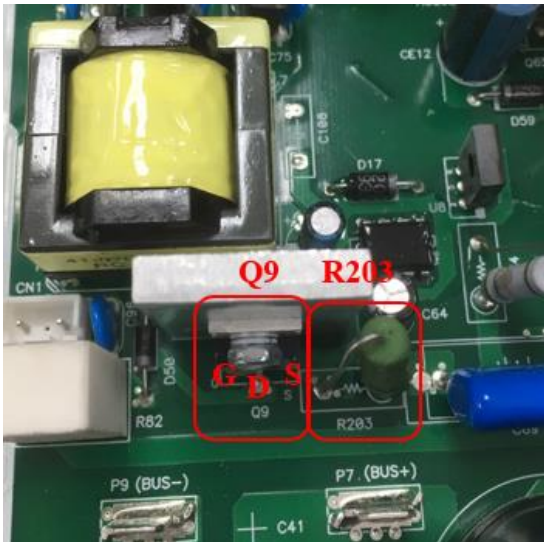
Product Axpert Max 3600-24

Doc No. P1911061

Version

00

PAGE



Parts	Attribute	Reference values	Failure status
Q9	Resistor	GS: 45k SD: 300K	Short or explosion
	Diode	SD: 0.52V SG: 0.73V	
Q8	Resistor	BC: 356k BE: 413k	Short or explosion
	Diode	BC: 0.59V	

Service Manual

Product Axpert Max 3600-24

Doc No. P1911061 Version 00 PAGE

		BE: 0.61V	
U8	Diode	PIN5 TO PIN7: 0.48V PIN5 TO PIN6: 0.64V	Short or other values
R203	Resistor	0.5 ohm	Open or other values
R204	Resistor	10 ohm	Open or other values
D53 ¹	Diode	+ to -: 0.52V - to +: OL	Short or explosion
R67	Resistor	22 ohm	Open or other values
D3	Diode	+ to -: 0.4V - to +: 0.7V	Short or explosion
D49/D57	Diode	+ to -: 0.45V - to +: OL	Short or explosion
U7	Diode	PINI to PINO: 0.56V PINO to PING: 0.44V PINI to PING: 0.45V	Short or explosion
U10	Diode	PINA TO PINI: 0.45V PINA TO PINO: 0.5V	Short or explosion
TX4	Resistor	PIN1 TO PIN3: 0.4 ohm	Short or other values

Note1: When test the D53; please remove the R67 from the board, otherwise the test result is not right

2.6 Check AC SPS

The F7 are (FUSE 3A 125V)

The NTC4 are (NTC 10 OHM 3.0A)

The REC3 are (GBU4M 4A 1000V UFST)

The D68 are (RHRP8120 8A 1200V)

The Q20 are (IRFBG30 3.1A 1000V)

The Q14 are (2SC5353BL 3A 750V)

The U12 are (IC PWM UC3845BNG DIP-8)

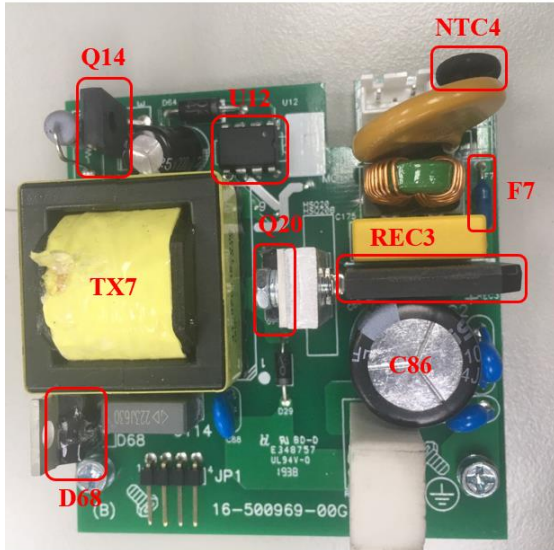
The TX7 are (TX 26:4:42:27 FER EC28)

Service Manual

Product Axpert Max 3600-24

Doc No. P1911061 Version 00 PAGE

The C86 are (33uF 450V)



Parts	Attribute	Reference values	Failure status
F7	Resistor	0.1 ohm	Open or explosion
NTC4	Resistor	11.4 ohm	
D68	Diode	+ to -: 0.458V - to +:OL	Short or explosion
Q20	Resistor	GS: 45.27k SD: 4.711K	Short or explosion
	Diode	SD: 0.536V SG: OL	Short or other values
Q14	Resistor	BC: 361.9k BE: 411.6k	Short or explosion
	Diode	BC: 0.598V BE: 0.611V	
U12	Diode	PIN5 TO PIN7: 0.492V PIN5 TO PIN6: 0.639V	Short or other values
C86	Capacitance	33uF/450V	

2.7 Check the bus soft start circuit (TX1: Especially for 09 fault)

The D6 is (RHRP8120 8A 1200V UFST)

The R29 is (RES 0.62 J)

The MOSFET Q3 is (IRFBG30 3.1A 1000V TO-220)

The D10 and D7 are (MUR4100ERLG 4A 1000V UFST)

Service Manual

Product Axpert Max 3600-24

Doc No. P1911061 Version 00 PAGE

The U2 is (IC PWM UC3845BNG DIP-8)

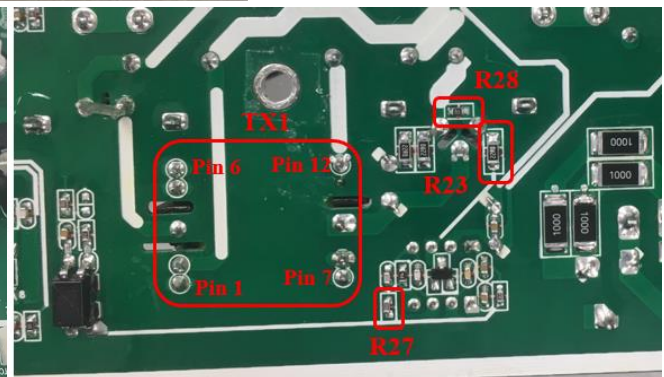
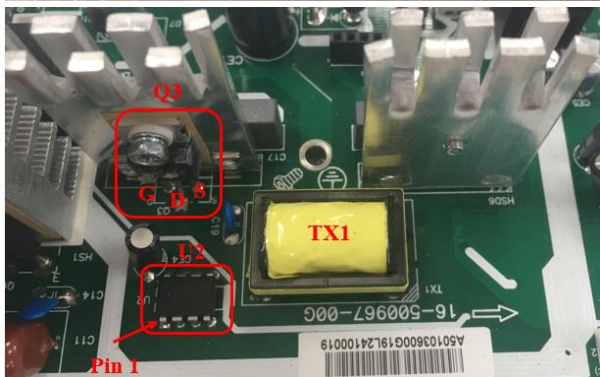
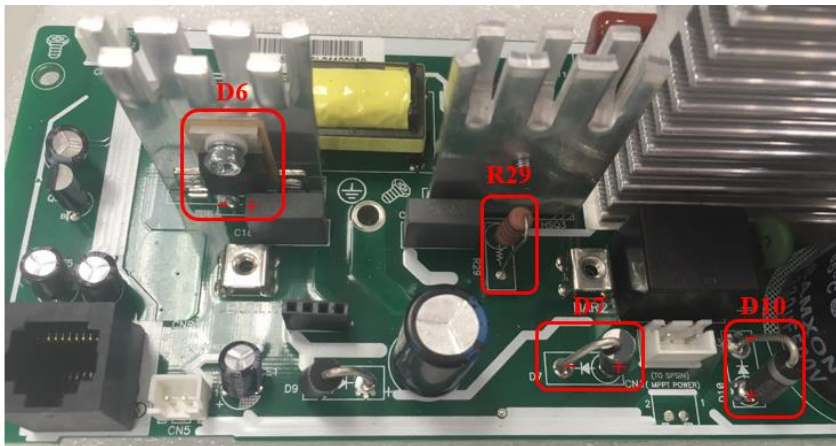
The TX1 is (TX 55:200:44 FER EEL16)

The R23 is (22R 1206)

The R27 is (1KR 0603)

The R28 is (1.2KR 0603)

Note: If R23 is damaged, please replace U2 together.



Parts	Attribute	Reference values	Failure status
D6	Resistor	+ to -: 237k - to +: OL	Short or explosion
	Diode	+ to -: 0.458V - to +: OL	
D10/D7	Diode	+ to -: 0.47V - to +: OL	Short or explosion
Q3	Resistor	GS: 1.195k SD: 4.692k DS: OL	Short or explosion

Service Manual					
Product	Axpert Max 3600-24				
Doc No.	P1911061	Version	00	PAGE	

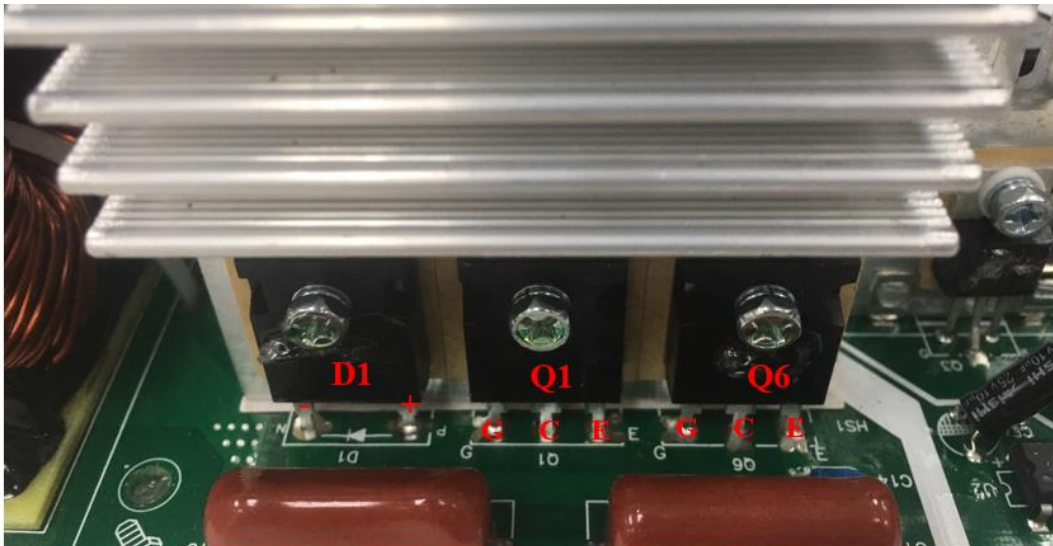
	Diode	SD: 0.535V DS: OL	
R29	Resistor	0.7 ohm	Open or other values
R27	Resistor	0.999K ohm	Open or other values
R28	Resistor	1.195K ohm	Open or other values
R23	Resistor	22 ohm	Open or other values
U2	Resistor	PIN7 TO PIN5: 72k PIN6 TO PIN5: 1.21k	Short or explosion
TX1	Resistor	PIN2 to PIN4: 2.7ohm PIN7 to PIN9: 1.4ohm	Short or other values

When 09 fault happens, and you couldn't find other damage, please check TX1!!

2.8 Check the Boost on MPPT board

Power devices

Boost IGBT Q1/Q6 and Diode D1



The D1 is (30DQ60BG 30A 600V TO-247)

The Q1 and Q6 IGBT are (STGW60H65DFB 60A 650V TO-247)

Parts	Attribute	Reference values	Failure status
Q1, Q6	Resistor	GE: 18.29k	Short or explosion

Service Manual

Product Axpert Max 3600-24

Doc No. P1911061 Version 00 PAGE

		GC: 206.1k CE: 358.7k
	Diode	EC: 0.389V CE: OL
D1	Diode	+ to -: 0.39V - to +: OL

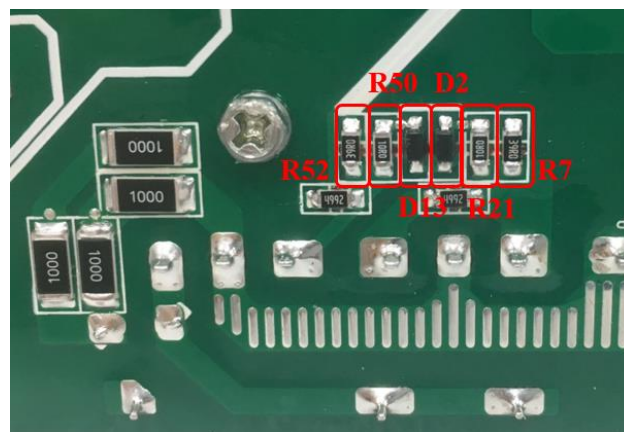
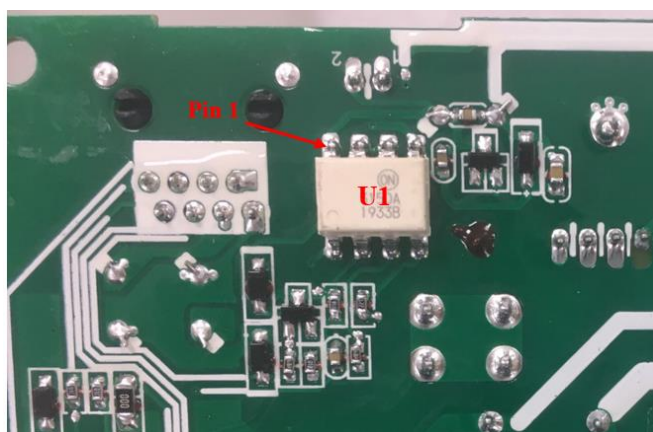
Drivers

The U1 are (FOD3150ASD SO-8)

The D2 and D13 are (1N4148W 0.15A 75V SMD)

The R12 and R50 are (10R 1206)

The R252 and R7 are (39R 1206)



Parts	Attribute	Reference values	Failure status
U1	Resistor	PIN8 TO PIN5: 350.7k PIN7 TO PIN5: 388k	Short or other values
D2/ D13	Diode	+ to -: 0.6V - to +: OL	Short or explosion
R12/ R50	Resistor	10 ohm	Open or other values
R52/ R7	Resistor	39 ohm	Open or other values

Note: When test the diode; please remove the R12/ R50 from the board, or the test result is not right.

3. Disassembling guide

Remove 8 screws on top cover and rear panel.



Remove LED cable and LCD cable, and take out the Remote cover.



Service Manual

Product Axpert Max 3600-24

Doc No. P1911061

Version

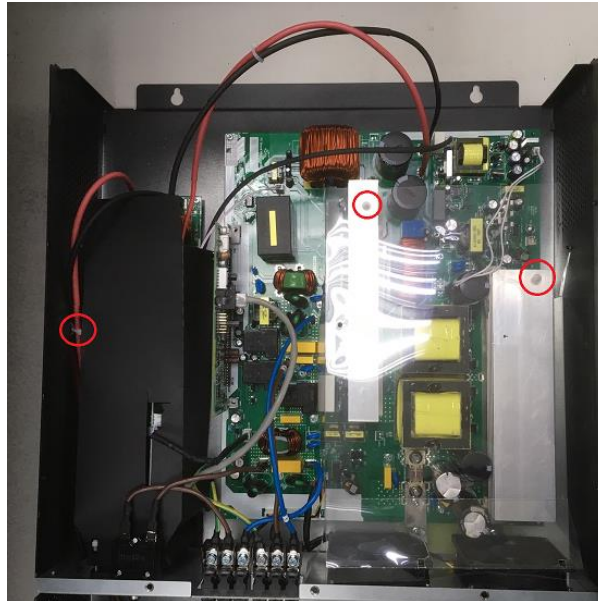
00

PAGE

Remove the plastic screws of wind pipeline. Be careful not to damage them. You can use an oblique mouth clamp to help you to remove the clip.

Note:

Please make sure that put the plastic sheet back and fix well. Otherwise it will affect the heat dissipation.



Service Manual

Product Axpert Max 3600-24

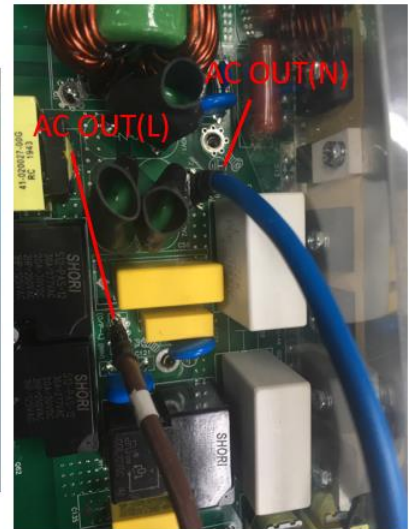
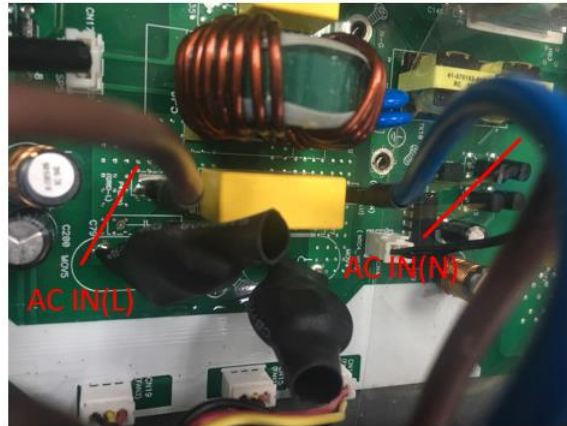
Doc No. P1911061

Version

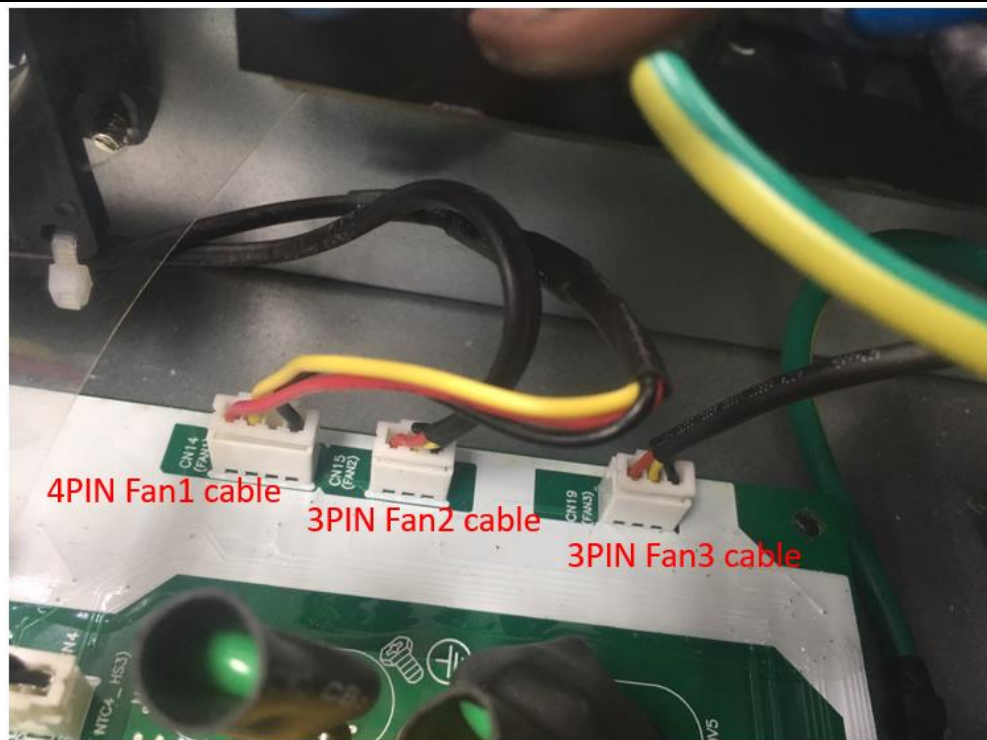
00

PAGE

Remove I/P and O/P cables.



Remove the fan cables.



Remove PV IN cable



Service Manual

Product Axpert Max 3600-24

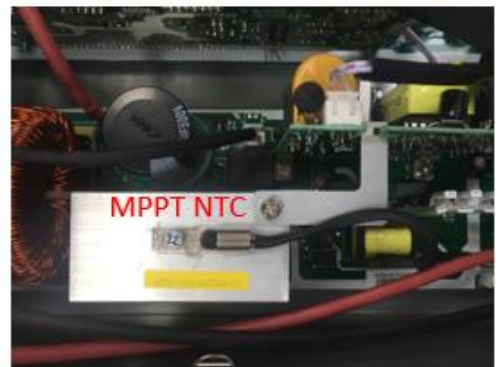
Doc No. P1911061

Version

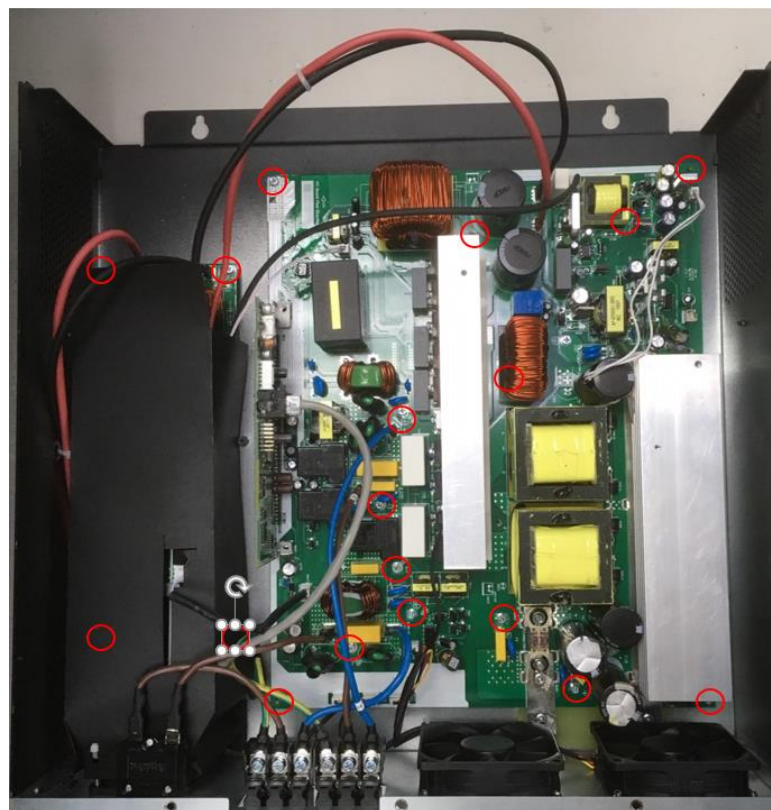
00

PAGE

MPPT NTC and
Converter NTC
and INV NTC



Remove 18
screws on main
board and take
out the main
board



Service Manual

Product Axpert Max 3600-24

Doc No. P1911061

Version

00

PAGE

1.1 Total wiring diagram:

Note: Wrong connection of wires may cause inverter damage!

Please connect wires with care!

