

# GLORY ASDC2-400 (2V400Ah)

Deep Cycle

## Specification

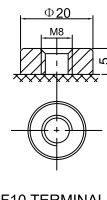
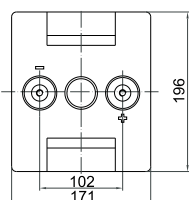
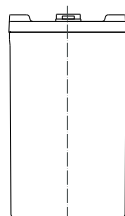
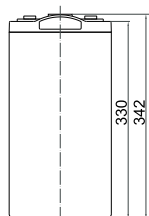
<b>Cells Per Unit</b>	1
<b>Voltage Per Unit</b>	2
<b>Capacity</b>	400Ah@10hr-rate to 1.80V per cell @25°C
<b>Weight</b>	Approx. 25.0 Kg (Tolerance ±3%)
<b>Internal Resistance</b>	Approx. 0.7 mΩ
<b>Terminal</b>	F10(M8)
<b>Max. Discharge Current</b>	2000A (5 sec)
<b>Design Life</b>	20 years (floating charge)
<b>Max. Charging Current</b>	80.0 A
<b>Reference Capacity</b>	C1 244.4Ah C3 309.6Ah C5 349.0Ah C10 400.0Ah
<b>Float Charging Voltage</b>	2.27 V~2.30 V @ 25°C Temperature Compensation: -3mV/°C/Cell
<b>Cycle Use Voltage</b>	2.43 V~2.47 V @ 25°C Temperature Compensation: -4mV/°C/Cell
<b>Operating Temperature Range</b>	Discharge: -20°C~60°C Charge: 0°C~50°C Storage: -20°C~60°C
<b>Normal Operating Temperature Range</b>	25°C ±5°C
<b>Self Discharge</b>	TECHNOPOWER Valve Regulated Lead Acid (VRLA) batteries can be stored for up to 6 months at 25°C and then recharging is recommended. Monthly Self-discharge ratio is less than 3% at 25°C. Please charged batteries before using.
<b>Container Material</b>	A.B.S. UL94-HB, UL94-V0 Optional.



DC (Deep Cycle) series batteries provide superior high integrity and reliability. It is specially designed for frequent cyclic charge and discharge. By using strong grids, thick plate and specially active material are designed for repeated deep-discharge applications. The DC series batteries offer 30% more cyclic life than the standby series. It is suitable for solar and wind renewable energy storage, mobility and medical equipment, V, telecom, broadband and cable TV, UPS systems etc.



## Dimensions



Length	196±2mm (7.72 inches)
Width	171±2mm (6.73 inches)
Height	330±2mm (13.0 inches)
Total Height	342±2mm (13.5 inches)
Terminal	Value
M5	6~7 N*m
M6	8~10 N*m
M8	10~12 N*m

Unit: mm

### Constant Current Discharge Characteristics : A(25°C)

F. V/Time	15MIN	30MIN	1HR	2HR	3HR	4HR	5HR	8HR	10HR
1.60V	615.3	390.8	244.4	150.5	112.8	90.82	75.46	50.72	42.20
1.65V	576.5	375.2	236.0	145.7	109.3	88.36	73.51	50.15	41.68
1.70V	539.9	358.6	228.3	140.9	106.4	85.95	71.59	49.37	41.06
1.75V	502.4	342.8	220.0	136.0	103.2	83.75	69.79	48.69	40.52
1.80V	463.9	327.6	211.6	131.1	100.0	81.35	67.99	47.86	40.00
1.85V	385.0	282.2	189.8	120.1	92.45	75.61	63.41	44.93	37.65

### Constant Power Discharge Characteristics : WPC(25°C)

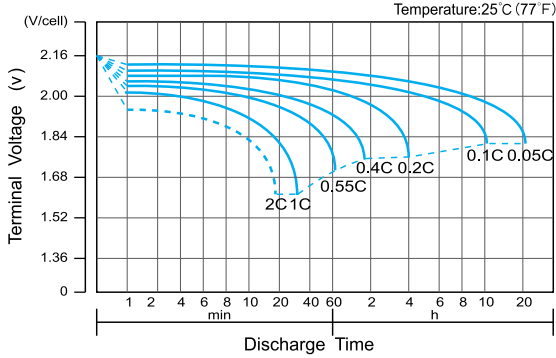
F. V/Time	15MIN	30MIN	1HR	2HR	3HR	4HR	5HR	8HR	10HR
1.60V	1075.6	709.8	459.3	285.3	215.5	174.4	145.5	99.05	82.95
1.65V	1022.7	688.6	446.1	277.5	209.7	170.3	142.2	98.14	82.06
1.70V	972.2	664.8	434.3	269.8	204.9	166.3	139.0	96.85	80.92
1.75V	917.9	642.0	420.9	261.6	199.6	162.6	136.0	95.69	79.96
1.80V	859.5	619.8	407.2	253.5	194.2	158.5	132.9	94.28	79.04
1.85V	723.4	539.1	367.4	233.5	180.4	147.9	124.4	88.71	74.51

(Note) The above characteristics data are average values obtained within three charge/discharge cycle not the minimum values. The battery must be fully charged before the capacity test. The C<sub>10</sub> should reach 95% after the first cycle and 100% after the third cycle.

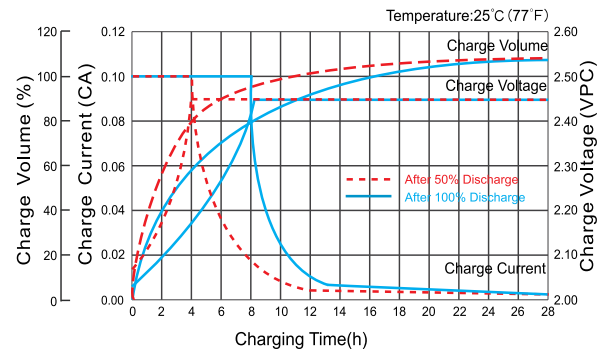
# GLORY ASDC2-400 (2V400Ah)

Deep Cycle

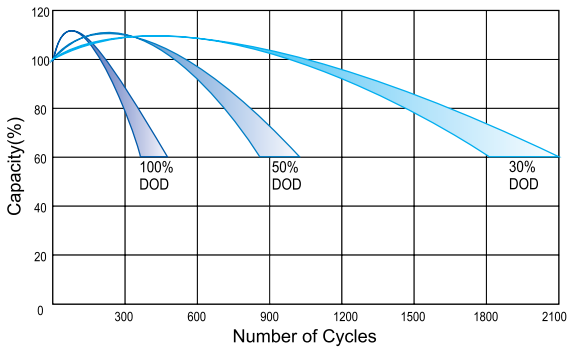
**Discharge Characteristics Curve**



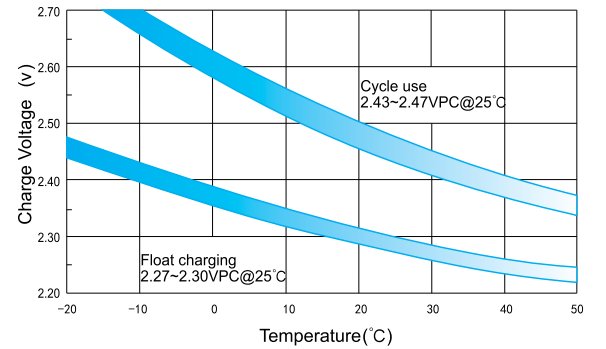
**Charge Characteristic Curve for Cycle Use (IU)**



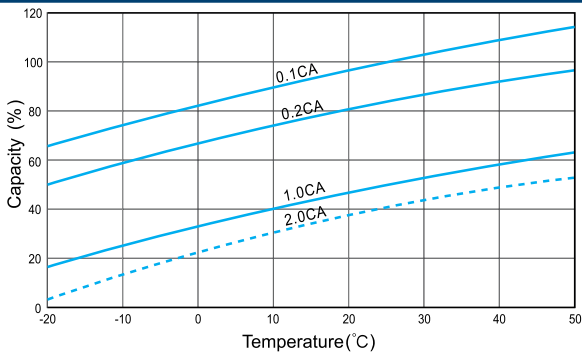
**Cycle Life in Relation to Depth of Discharge**



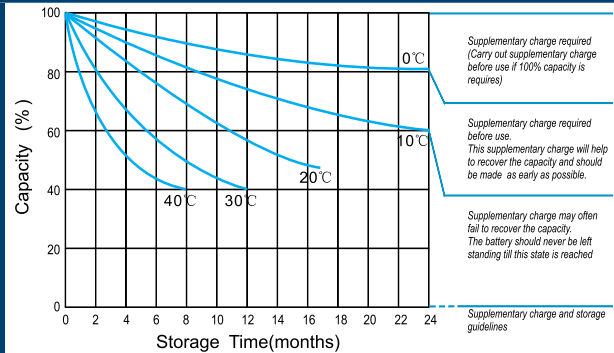
**Relationship Between Charging Voltage and Temperature**



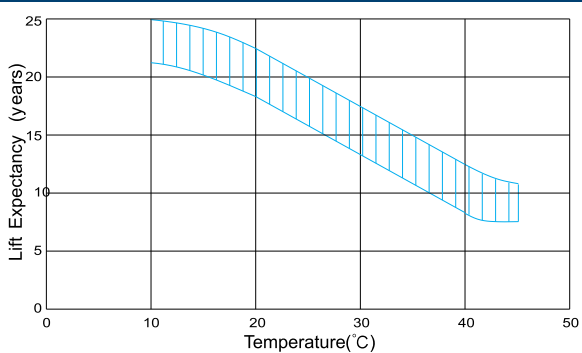
**Temperature Effects on Capacity**



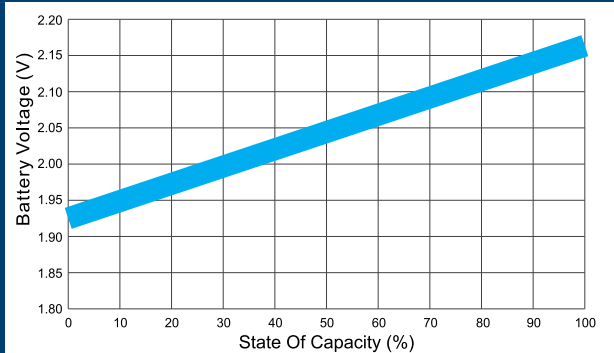
**Storage Characteristics**



**Effect of Temperature on Long Term Life**



**Relationship of OCV And State of Charge (20°C)**



(Note) All above information shall be changed without prior notice, Ritar reserves the right to explain and update the latest information.